

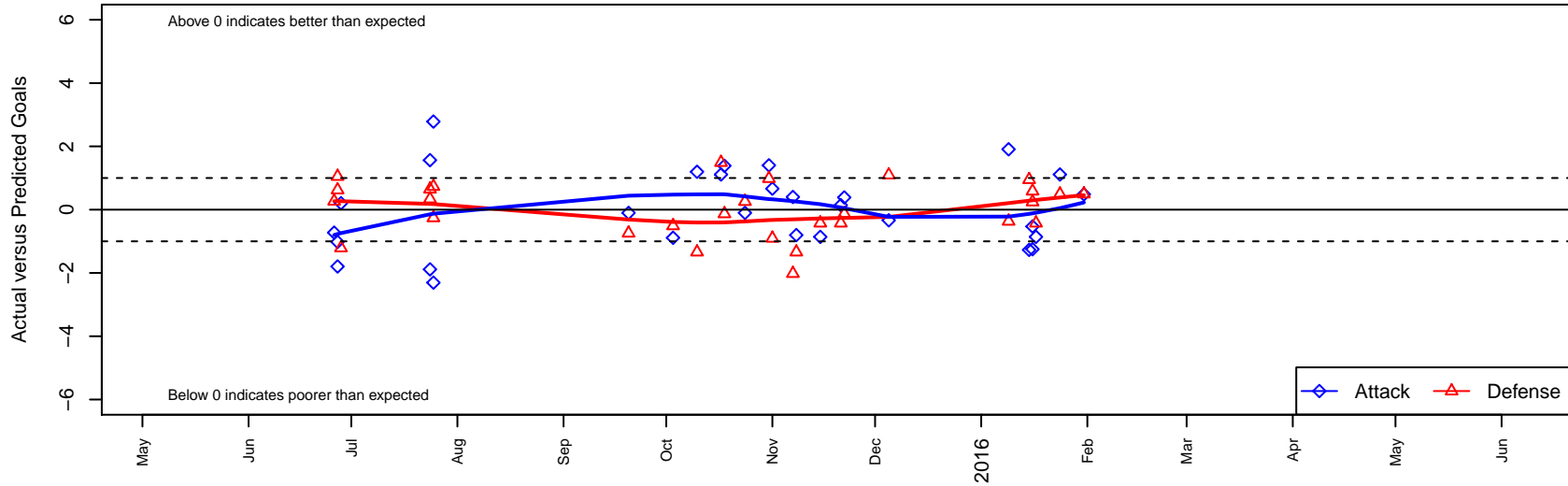
Washington Timbers Green B98

Washington Timbers
 Vancouver, WA
 B98 total strength=1533
 attack=12.45 defense=12.96
 fall league = RCL B98 Div 3

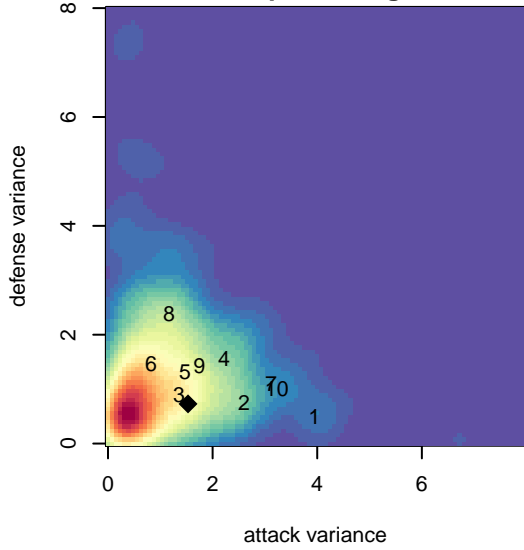
alt names used:
 WA Timbers B98 Green B
 WA Timbers B98 Green B
 WA Timbers B98 Green

Venues played:
 2015 Clash At the Border Gold/Silver HS
 2015 Oswego Nike Cup Super Group Silver U1
 2015 RCL B98 Div 3
 2015 WYS Presidents Cup B98
 2015 Portland Winter Showcase U17

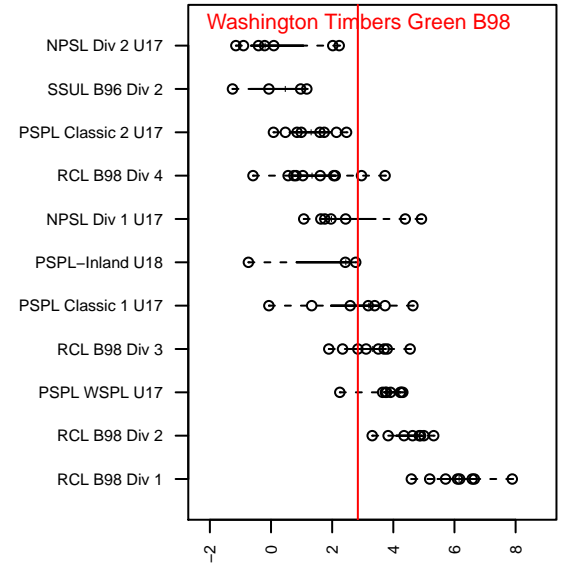
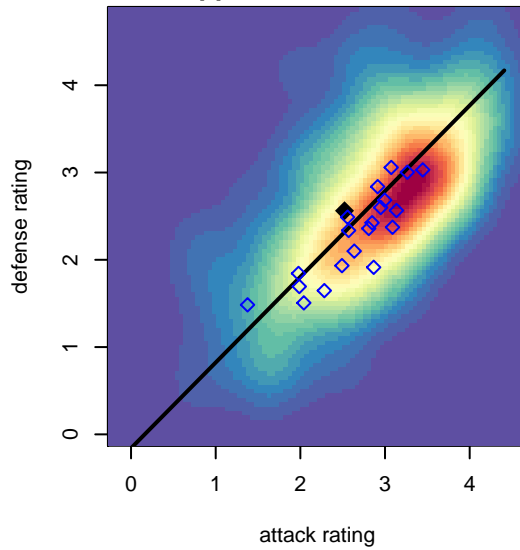
Washington Timbers Green B98
 Dots are actual minus expected GF (blue circles) and GA (red triangles).
 Blue line is smoothed change in attack strength. Red is smoothed change in defense strength.



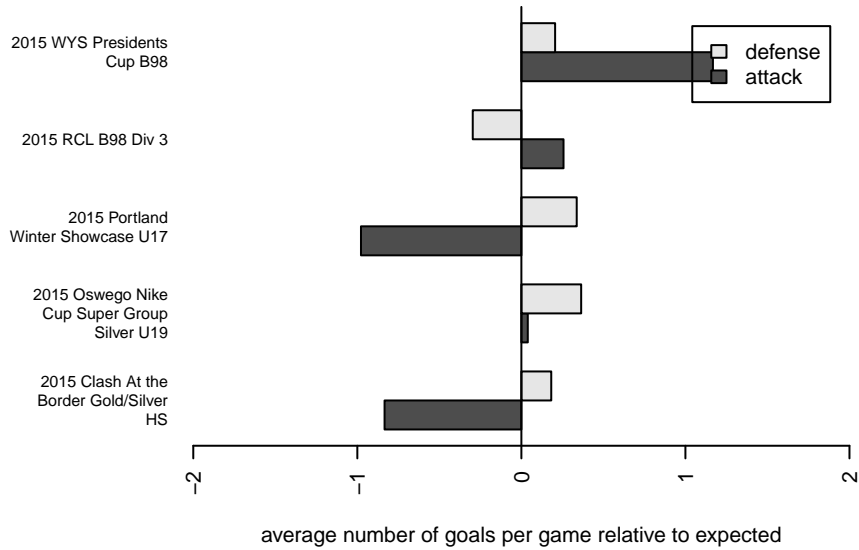
**attack and defense variance (black dot)
relative to other teams
and top 10 in region**



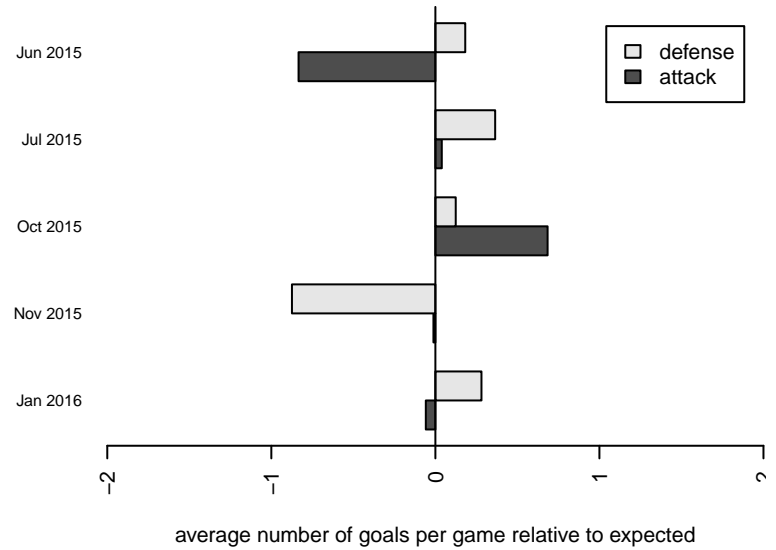
**attack and defense rating
relative to others at age
and all opponents in last 13 months**



Performance relative to 13 month average



Performance relative to 13 month average



date	home		away		venue	pred.home	pred.away
2016-01-31	FWFC Blue B98	2	Washington Timbers Green B98	1	2015 WYS Presidents Cup B98	2.49	0.52
2016-01-24	Washington Timbers Green B98	2	Seattle United Samba B98	1	2015 WYS Presidents Cup B98	0.89	1.49
2016-01-17	Washington Timbers Green B98	0	Whatcom Rangers Gold B98	2	2015 Portland Winter Showcase U17	0.86	1.57
2016-01-16	Blackhills FC Black B98	1	Washington Timbers Green B98	0	2015 Portland Winter Showcase U17	1.58	0.53
2016-01-16	NWN Red B98	1	Washington Timbers Green B98	0	2015 Portland Winter Showcase U17	1.24	1.25
2016-01-15	Washington Timbers Green B98	0	FC Portland White B98	0	2015 Portland Winter Showcase U17	1.27	0.95
2016-01-09	Washington Timbers Green B98	4	Crossfire Premier C B98	1	2015 WYS Presidents Cup B98	2.09	0.63
2015-12-05	WA Rush Nero B98	0	Washington Timbers Green B98	1	2015 RCL B98 Div 3	1.10	1.34
2015-11-22	WPFC Navy B98	1	Washington Timbers Green B98	2	2015 RCL B98 Div 3	0.87	1.61
2015-11-21	Whatcom Rangers Gold B98	2	Washington Timbers Green B98	1	2015 RCL B98 Div 3	1.57	0.86
2015-11-15	Washington Timbers Green B98	0	Whatcom Rangers Gold B98	2	2015 RCL B98 Div 3	0.86	1.57
2015-11-08	SSC Shadow A B98	3	Washington Timbers Green B98	0	2015 RCL B98 Div 3	1.66	0.80
2015-11-07	PacNW Blue B98	4	Washington Timbers Green B98	1	2015 RCL B98 Div 3	1.98	0.60
2015-11-01	Washington Timbers Green B98	2	WA Rush Nero B98	2	2015 RCL B98 Div 3	1.34	1.10
2015-10-31	Washington Timbers Green B98	2	PacNW Blue B98	1	2015 RCL B98 Div 3	0.60	1.98
2015-10-24	Eastside FC White B98	1	Washington Timbers Green B98	1	2015 RCL B98 Div 3	1.26	1.10
2015-10-18	Washington Timbers Green B98	3	WPFC Navy B98	1	2015 RCL B98 Div 3	1.61	0.87
2015-10-17	Seattle United Samba B98	0	Washington Timbers Green B98	2	2015 RCL B98 Div 3	1.49	0.89
2015-10-10	Washington Timbers Green B98	2	SSC Shadow A B98	3	2015 RCL B98 Div 3	0.80	1.66
2015-10-03	Washington Timbers Green B98	0	Seattle United Samba B98	2	2015 RCL B98 Div 3	0.89	1.49
2015-09-20	Washington Timbers Green B98	1	Eastside FC White B98	2	2015 RCL B98 Div 3	1.10	1.26
2015-07-25	Pacific FC White-Cheetahs B98	1	Washington Timbers Green B98	4	2015 Oswego Nike Cup Super Group Silver	1.73	1.22
2015-07-25	Eastside Timbers Black B98	1	Washington Timbers Green B98	0	2015 Oswego Nike Cup Super Group Silver	0.74	2.31
2015-07-24	Washington Timbers Green B98	0	THUSC Indium B98	0	2015 Oswego Nike Cup Super Group Silver	1.89	0.65
2015-07-24	Washington Timbers Green B98	4	Crossfire Oregon Black B98	0	2015 Oswego Nike Cup Super Group Silver	2.44	0.34
2015-06-28	Gala FC A 1998B	3	Washington Timbers Green B98	1	2015 Clash At the Border Gold/Silver HS	1.79	0.80
2015-06-27	BSC Portland Black-Legends B97	0	Washington Timbers Green B98	1	2015 Clash At the Border Gold/Silver HS	0.62	2.80
2015-06-27	Washington Timbers Green B98	0	Sandpoint Strikers B97	0	2015 Clash At the Border Gold/Silver HS	1.02	1.05

date	home		away		venue	pred.home	pred.away
2015-06-26	Washington Timbers Green B98	1	Gala FC B96	1	2015 Clash At the Border Gold/Silver HS	1.73	1.27